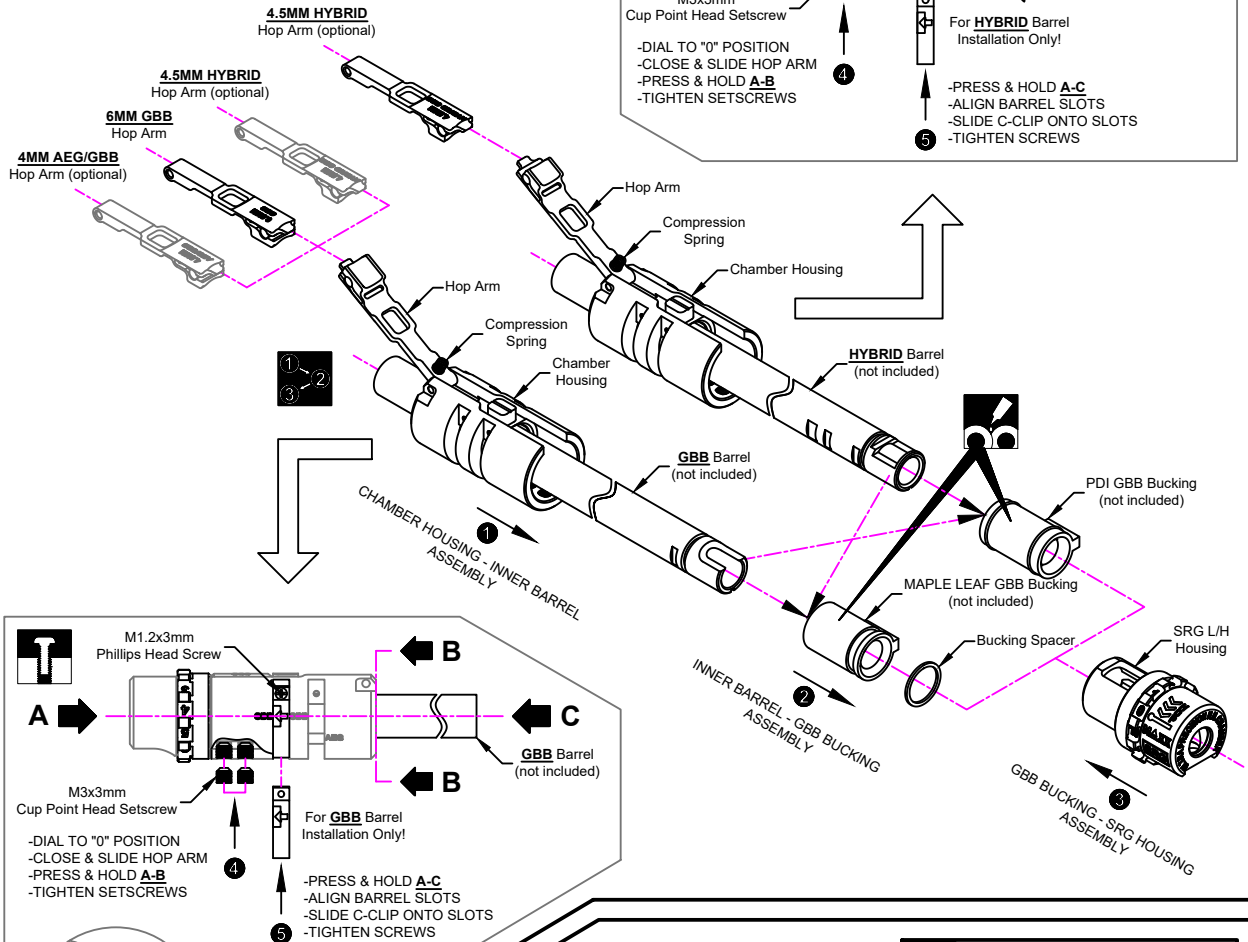


# ULTRA PRECISION HOPUP CHAMBER SRG (L/H)

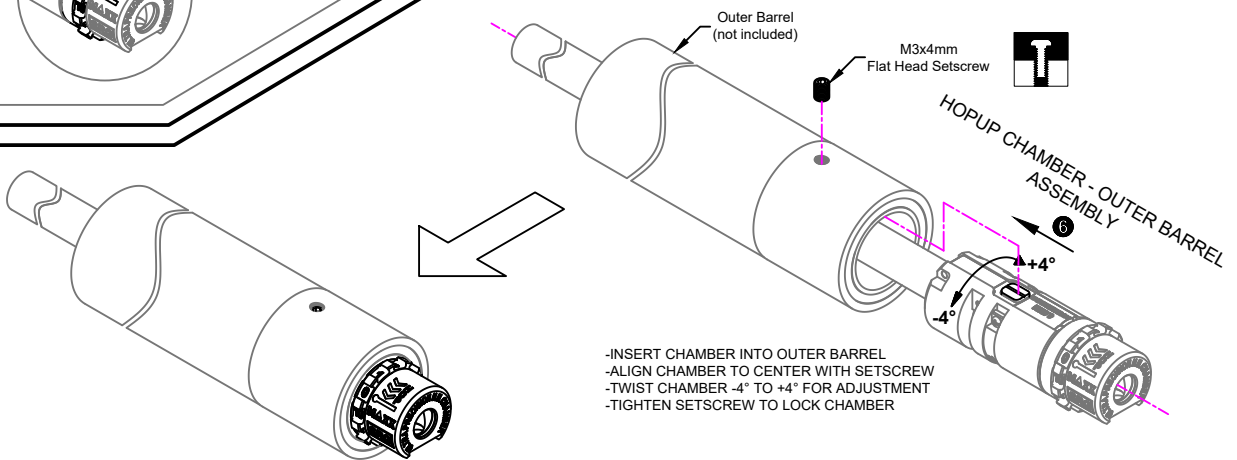
MAXX MODEL PRODUCTS, INC.

COPYRIGHT © 2019

## 1 INNER BARREL INSTALLATION



## 2 OUTER BARREL INSTALLATION



Assemble in this order



Apply Silicone grease



Tighten firmly, do not overtighten

**CAUTION: Please check your model carefully before operation!**

REV. MX-HOP009SGL-241219-02